

My Appointment  
(Date, time, location)

---

---

---

---



**MRI testing is performed at these  
NNA offices**

**AKRON  
Main Office**

130 West Exchange St., Akron, OH 44302  
330.376.1902  
FAX 330.376.1599

**HUDSON**

**The Health Center at Western Reserve**  
5655 Hudson Dr., Suite 110, Hudson OH 44236  
330.342.4020 (Akron)  
330.656.1600 (Cleveland)  
Fax: 330.342.4040



Located across from Children's Hospital  
at the corners of Exchange, Locust and Cedar Streets  
in Akron, Ohio



Located on Hudson Drive, south of Terex Road



**Your MRI at NNA**  
*What our patients need to know*



**NEUROLOGY &  
NEUROSCIENCE  
ASSOCIATES, INC.**

[www.nnadoc.com](http://www.nnadoc.com)

# About Your MRI at NNA



You are scheduled for a Magnetic Resonance Imaging (MRI) exam at Neurology & Neuroscience Associates, Inc. Our Akron and Hudson MRI facilities are

fully accredited and provide comprehensive brain, neck, spine, abdomen and body scans.

It can also be used to evaluate many blood vessel disorders by using special non-invasive imaging techniques known as MRA, Magnetic Resonance Angiography.

There are many reasons why your physician has ordered an MRI. Indications may include back pain, recent spine or joint injury, headaches, dizziness, stroke, metastatic disease and abdominal or pelvic pain.

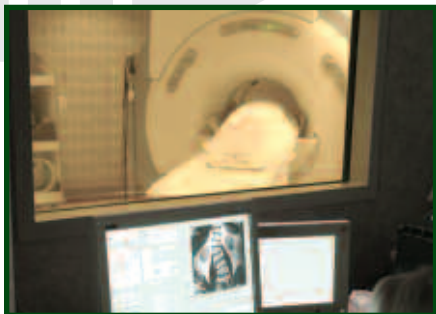
This brochure will address concerns you may have about your upcoming scan. If you have questions, please call 330.535.2715 and ask to speak with an MRI technologist.

## What is an MRI?

An MRI is a painless procedure that has virtually no known side effects.

MRI uses harmless radio waves and magnetization to produce very clear images of the internal body structure.

Data from the scan is fed into computers,



which generate pictures that will be studied by your doctor to assist with a diagnosis.

Images created by the MRI scanner are similar to an X-ray, but the MRI process can "see" through hard bone to your muscles and internal organs. These images are very precise, showing differences between normal and abnormal tissues.

## Before your MRI

Arrive 15 minutes prior to your appointment time. Late arrivals may be asked to reschedule.

Wear comfortable clothing without zippers or metal (e.g., underwire bras, belts, barrettes). Remove all makeup and jewelry. Sometimes patients must change into hospital scrubs. A secure locker is provided.

Because of the magnetic fields, the following personal items are not permitted in the scan room: coins, credit cards, jewelry, glasses, watches, keys, hair clips, hair weaves or wigs, dentures or partial dental plates, pocket knives, and other objects that may contain metal. Please leave these items at home or in the locker.

You may eat normally and take any prescribed medications on the day of the exam.

Notify the technologist if you have any of the following:

- cardiac pacemaker or defibrillator
- artificial heart valves
- recent stent placements
- cochlear implants
- brain aneurysm clips
- metal fragments in the eyes or body
- surgical staples
- metal implants
- penile implants
- shrapnel or if you've been shot with a gun
- permanent eyeliner
- implanted electrical devices
- possibility of pregnancy
- surgery within the past eight weeks

## Special considerations

Because we use a strong magnet in the MRI, patients who have pacemakers cannot have an MRI exam. Many implanted metal items such as hip replacements and knee replacements as well as heart stents are safe to scan after eight weeks.

## During your MRI

You will be completely awake for the painless MRI; your scan will last approximately one hour.

First, a technologist will assist you onto a padded table. If desired, you may listen to music during your MRI. Then the technologist will leave the scan room, and the table will move slowly into the magnet opening. The inside of the machine is like a tunnel that is well-lit and open on each end.

While stationed outside the MRI scan room, the technologist will be able to see and hear



you during the entire exam. You may contact the technologist at any time.

You will hear a fast tapping sound and feel a vibration caused by the magnet. This is harmless and normal. It is important to lie still while the images are acquired. Motion negatively impacts the sharpness of the images.

## Following your MRI

Because an MRI scan creates no after-effects, you may leave as soon as the scan is completed. Normal activities such as driving and working may be resumed immediately.

A board-certified radiologist or neuroradiologist will study your images and report the results to your physician. Your physician will discuss the results with you at your follow-up appointment.

## Frequently Asked Questions about MRI

### Does it hurt to have an MRI?

No. There is no pain involved with an MRI procedure. Our spacious, air-conditioned scan rooms are very comfortable. Our professional, courteous staff will assure that your MRI experience is a positive one and will assist with any special needs you might have.

### Is it safe?

Yes. The MRI uses a magnet to create radio waves. A computer "listens" for the radio signals and converts these signals into very detailed pictures of the scanned body parts. You are not exposed to any radiation during an MRI.

### Will my head go into the MRI machine?

Perhaps. It depends on what body part is being scanned. The body part being scanned must be centered under the magnet. In general, if the scanned area is above the waist, your head will go under the magnet. If you are being scanned below the waist, your head will not go into the machine.

### Does the MRI exam require any needle sticks or injections?

When needed to help make a diagnosis, an MRI contrast agent is given to improve the quality of certain images. Your doctor will decide if the contrast injection would be helpful for your particular exam. MRI contrast reactions are rare and usually not more severe than a headache. If your exam requires the use of an MRI contrast agent, the technologist will start an IV before or during the exam and administer the contrast.